

The Tree and Bee Network

Connecting people and nature through the creation of resilient and sustainable landscapes



Helen Brown
Treescapes



Fair Oak & Horton Heath



PLANTING Spring bulb planting takes place during October, November and early December, while trees can be planted through to late February. We will still plant trees in light ground frost but if the soil is frozen below the surface we won't plant as it can cause the trees to shock – and is akin to digging iron!



Fair Oak Road/Eastleigh Road verge:

We had a fantastic morning planting in December with volunteers from 'Reach out Caring' who turned out to help us plant 300 English bluebells and 100 native daffodils – we also planted 100 native primroses on the bank facing Fair Oak Road. The team worked extremely hard and we are very grateful for their help and hard work!

We will be planting trees here soon and will continue to relax the mowing regime to allow more native plants to emerge from the natural seed bank - watch this space for a floral transformation that will provide fodder and cover for wildlife!





Dean Road: During December we held a planting day at the Dean Road open space where volunteers helped to plant 200 native bluebells under the tree canopies of existing trees and 100 native daffodils along the frontage.

We have organised an additional tree planting day on 21st January when we will be focusing on getting the fruit trees in. Momentum is picking up for this site as more volunteers join the buzz!

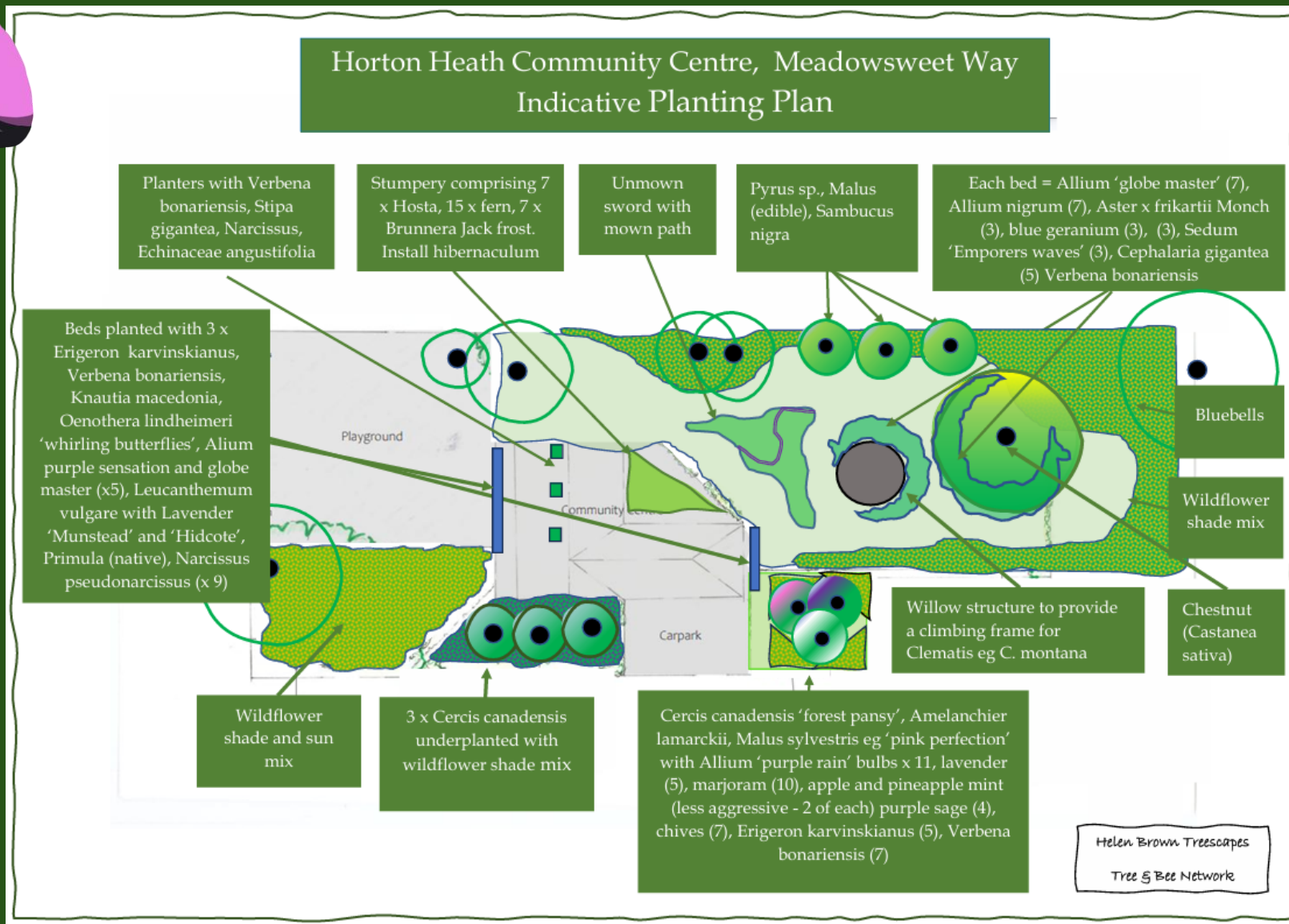


Upper Barn Copse: This space will have new play equipment and a complimentary planting plan which reflects the desires of its residents. To this end, during December, we held a workshop with residents to discuss the planting design for this space. We had very positive and helpful feedback which we will incorporate into the concept design. We will continue to liaise with residents to ensure the space serves their needs as well as enhancing it for wildlife.





Meadowsweet Way: We will be planting trees at this site on Wednesday 21st at 10am. Everyone is welcome to join us, so please come along and meet like minded friends - dress for the weather as we will be planting unless the ground is frozen.



This is the proposed planting plan – we welcome any comments about this as the garden is for you to enjoy, so please do get in touch with any thoughts.



Volunteer Tree & Bee gardens

Get involved without even leaving your own back (or front) garden...



During December we visited the wonderful wildlife garden of Margaret and Chris who would like their garden to be a part of the Tree & Bee Network. Their garden is a showcase of the ultimate wildlife garden – not perfectly tidy – but perfect for wildlife which brings enjoyment for them too. Margaret and Chris have planted a diverse range of evergreen and broadleaved trees, plants and shrubs to make sure there is winter cover and berries; such as yew, cotoneaster and holly during the harsh winter months. They resist the urge to cut back plants once they have flowered, instead leaving long and hollow stems as overwintering sites for insects and seed heads for birds. They have a pond which is deep enough to allow aquatic wildlife to overwinter in the warmer depths – with a ‘ladder’ of branches for easy access.

Margaret and Chris are also fortunate enough to have a magnificent oak in their garden – which is a haven for wildlife and also provides much needed shade for them during the summer months. More information to come!



If you would like your garden to be part of the Tree and Bee Network, please do get in touch: treeandbee@eastleigh.gov.uk
or community@fairoak-pc.gov.uk





Bishopstoke Tree & Bee Gardens

PLANTING Spring bulb planting takes place during October, November and early December, while trees can be planted through to late February. We will still plant trees in light ground frost but if the soil is frozen below the surface we won't plant as it can cause the trees to shock – and is akin to digging iron!



Otter Close Park

In December, with the help of our amazing volunteers, we planted 300 English bluebells and 150 native daffodils. We will be planting trees on 10th January – so please come along and join us. It's a great way to shake off the winter blues, get some fresh air and meet like minded friends while making a positive change to your local landscape.

The aim is to enhance this space with planting, so it looks more beautiful year-round while providing shade in summer.

Most importantly, the trees will provide fodder and overwintering sites for wildlife. We will also be relaxing the mowing regime in places, to allow the natural seed bank to push through. Experience has taught us this is more cost effective than wildflower seeding and avoids the use of chemical sprays as the seed beds don't need any

preparation or watering. Once flowering has finished, the plants are left to overwinter providing a valuable seed source for birds and protective niches for insects. Mammals such as hedgehogs need untidy piles of leaves and foliage to hibernate during the winter months – so there is a good reason not to tidy up too much and allow nature to thrive in a more relaxed environment, which may look untidy to us.

1 Nov 2025 First wave of bulbs planted. 12 Tete-A-Tete 10 Fritillaries split across both sites around the street sign



Volunteer diaries

Many of the Tree & Bee gardens in Bishopstoke are now looked after by volunteers, who enjoy spending time tending the gardens as much as admiring their beauty and being a part of nature on their doorstep. One of our volunteers, Diane Gabriel, has documented her work which she would like to share with you. All images are taken by Diane.

17 Nov 2025 Artichokes grown over the past year have been put into the sites, two each. They looked healthy when put in but of course were dying down over winter. Will monitor to see what success is with the roots over the season



26 Nov 2025 - 27 Nov 2025



Dug out and split some Currants from our new allotment site with two good sized bushes planted onto the sites to replace the dead Ben Sareks.

As the currants were not labelled or in fruit at our allotment, I was unable to tell which type they were.....There should now be two different types of currants on these sites, and will monitor for successful rooting and acclimatizing to the site in early spring.



10 Dec 2025

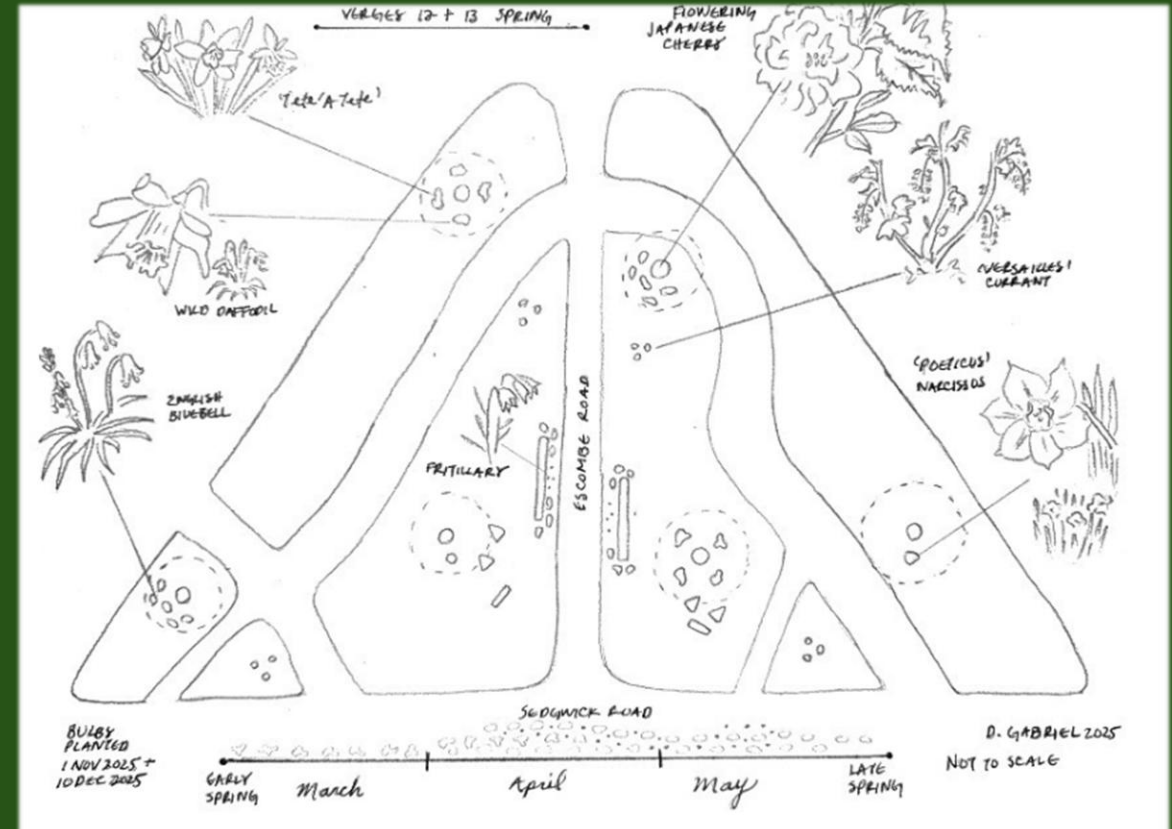


Last of bulbs went into sites with T&B supplied bulbs. Approximately 20+ wild daffodils, 20+ Tete A Tete, 25+ Bluebells split across both sites. I also added 6 bulbs of Poetica, or Actaea Narcissus split across both sites.

11 Dec 2025 -

Map of bulbs and site visit. There seems to be some damage already to the site 12 new currant, as the bark seems to be stripped from the branch, not sure if it was post cutting, as its very close to the bush, or if some rodent has been nibbling on it, however, most likely after cutting, as its not present on any of the other branches on the other side.

The plan for gardens 12 & 13:



Volunteering in Bishopstoke

We are delighted to have more volunteers who have joined us to help nurture many of the Tree & Bee Gardens in Bishopstoke and we are Extremely grateful for their help in making Bishopstoke a greener and more biodiverse place to live. We still need

Garden 14
Escombe
Road

We will introduce you to the rest of the team and help you learn how to nurture the garden for wildlife and grow organic food for yourself and your community



However, we still need more help with the Bishopstoke Tree & Bee Gardens which are currently looking for guardians.

If you live near any of these areas and would you like to get involved with planting and harvesting? Please get in touch!

Garden 10
East Drive

Garden 15
Hamilton
Road/Underwood
Road

Garden 16
Hamilton
Road/Underwood
Road

The Bishopstoke Tree & Bee Gardens (contd)

Gardens 15 & 16
Hamilton
Road/Underwood
Road

Pupils at Stoke Park School
helped to design the signs which
you may have seen waymarking
the Tree & Bee sites....



Otter Close Play
area

Please contact
treeandbee@eastleigh.gov.uk or
admin@bishopstoke.org for more
information