

The background is a dark green field filled with various botanical illustrations. In the top left, there are white lilies and autumn leaves in shades of orange and red. A large bumblebee with yellow and black stripes is flying in the top center. To the right, there are more white flowers and autumn leaves. On the left side, there are green fern-like plants and a cluster of purple berries at the bottom. The title text is centered in the upper half of the image.

# The Tree and Bee Corridor Project Update June 2025

Funded and delivered by Bishopstoke, Fair Oak and Horton Heath Local Area Committee and local partners



Bishopstoke Parish Council



**WE CAN  
MAKE A  
DIFFERENCE**  
#CO2Neutral2030



Helen Brown  
Treescapes



We are delighted to report that the project is evolving from a corridor into a more dynamic network. So, you may see reference to both the Tree & Bee Corridor and Tree & Bee Network.

The project in Bishopstoke and Fair Oak is developing well, thanks to the help of our brilliant volunteers who are continuing to nurture and water the forest gardens.

They have also planted more trees and fruiting bushes, making the areas more diverse and attractive to pollinators.

Remember these areas are for you to enjoy, even if it's just to take a diversion from the paved footpath to watch the butterflies or sit in the long grass for some peace and solitude.

A decorative banner at the top of the page features a dark green background. On the left, there are stylized autumn leaves in shades of orange, red, and yellow, along with white flowers. In the center, a black and yellow bumblebee is depicted in flight. On the right, there are more white flowers and autumn leaves.

## Fruitful Fair Oak

In Fair Oak, we are working with your community to create more diverse green spaces for residents to enjoy. With the help of amazing volunteers, we have started work at Dean Road open space, planting climbers such as hardy kiwi, grape, beans and nasturtium, as well as sunflowers which have been grown from seed by residents (and a contribution from Jon of the Bishopstoke volunteer group). Look out for the plants growing along the front fence line, along with the butterflies or bees they attract.

We had originally planned to create a forest garden in this space, but plans have been paired back to make sure it remains a space that caters for a diverse range of activities which everyone can enjoy.

We are also enhancing 'Oak Walk' and working with Fair Oak Junior School, who have created fabulous drawings for our Tree & Bee signage – look out for them dotted around the area, waymarking the project's planting sites. The Primary School children will be helping to redesign their school grounds, to increase the habitat potential for wildlife – we look forward to seeing the designs and putting this into action during the autumn planting season. Meanwhile, the infant school have been busily creating designs for a Tree & Bee mascot!





A big thank you to our wonderful volunteers who helped to plant the fence line at Dean Road and are watering the new plants during dry weather.







# Bishopstoke

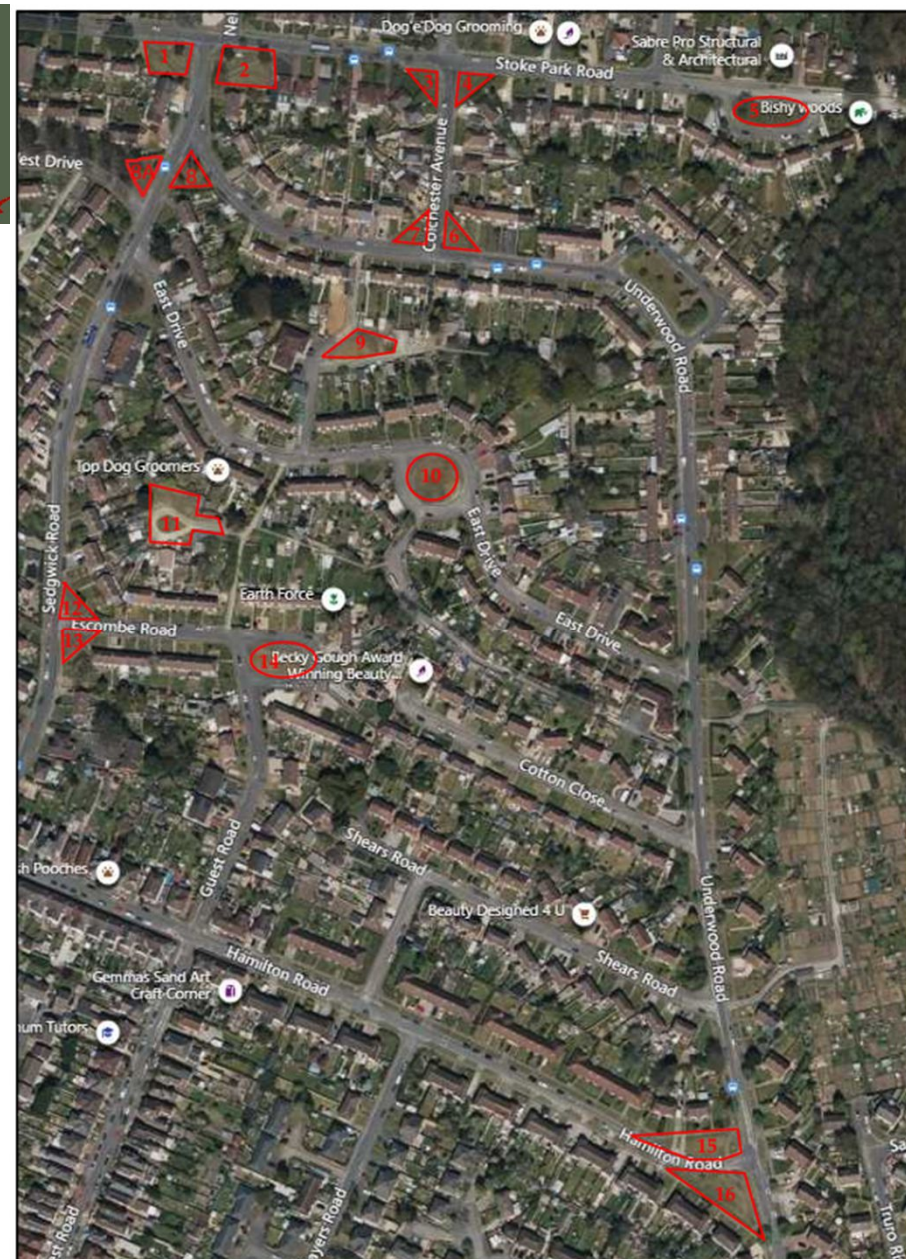
To date we have planted 15 sites throughout Bishopstoke with a mix of fruiting trees and shrubs. With the help of volunteers and 'Greensmile Ltd' we are continuing to develop these sites, transforming them from unused heavily mown areas to dynamic edible ecosystems which provide food for us and for pollinators. These areas act as green service stations for wildlife travelling between larger areas of woodland, but they are also a green oases for residents to enjoy. See map opposite for locations.

The planted sites are now waymarked with new signs which have been generated using amazing art from Stoke Park School, so you can clearly see which sites we are developing – each sign also has a QR code which connects to the Parish Councils and Eastleigh Borough Council websites for more information.

We have volunteers who are helping to develop many of these sites, but **we are still looking for volunteer help with sites 2, 7, 9, 10, 11, 14 & 15** – if you would like to get involved with growing organic produce on your doorstep and helping to nurture the trees, please get in touch.

We ask that you contact us before planting as it is important that we screen the plants for invasive potential and to make sure they are appropriate in terms of toxicity. We can also put you in touch with the other volunteers.

Please see some of the photographs of our wonderful volunteers and the fledgling forest gardens below (with kind permission from Diane Gabriel, Diana Goodyear, Dawn Ayling, Steve Strickland and Jon Marks).

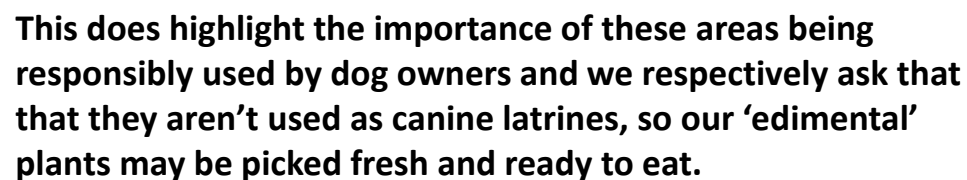




Site 1 (Sedgewick Road) with volunteers hard at work....











Site 8A during spring



Site 1 during spring



## Adapting to climate change...

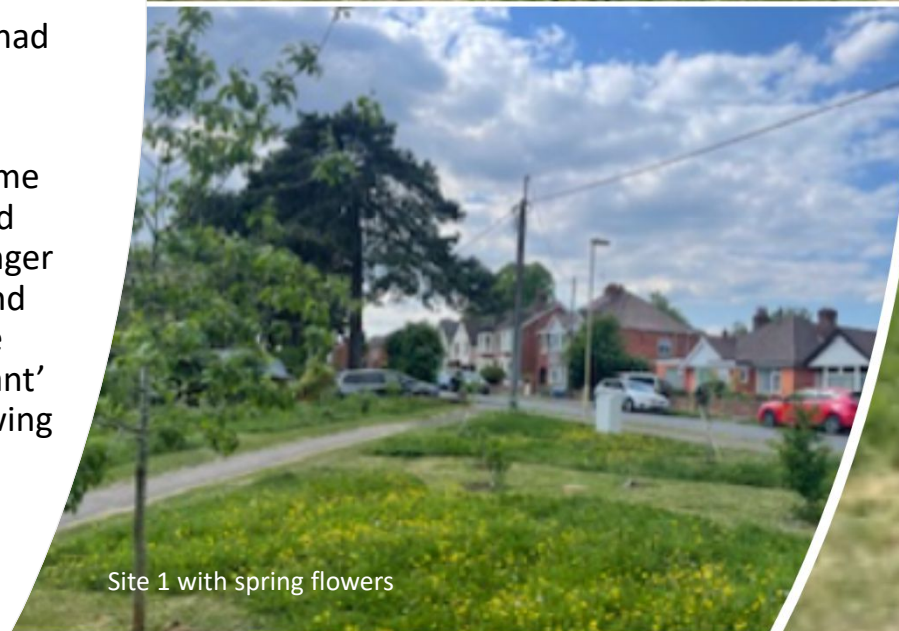
This year has proved to be very challenging in terms of extreme heat and very little rainfall, so we are grateful to the volunteers for helping to water the recently established trees and plants.

We laid wildflower seed early in the spring, but the dry weather has made it difficult for the seeds to establish, and watering two or three times a week is not a sustainable approach, so the results are not as successful as we had hoped.

However, something positive has come out of this as the volunteers noticed flowers growing naturally in the longer grass and are helping to monitor and nurture them. We will spread more seed in the autumn and 'pocket plant' wild flowers to bolster what is growing naturally.



Dawn looking after site 4 on Colchester Avenue



Site 1 with spring flowers







Not all the sites are thriving as successfully, which is why need more volunteer help please. This is site 11, which has suffered with ground compaction due to cars being parked on the grassy area.

It would be great if any residents living around this area (East Drive/Sedwick Road/Escombe Road) would like to help with watering or planting more fruit trees in the autumn.

Please get in touch if you can help? We would love to hear from you.





Eating apple fruitlets



Young black currants



Oxeye daisies

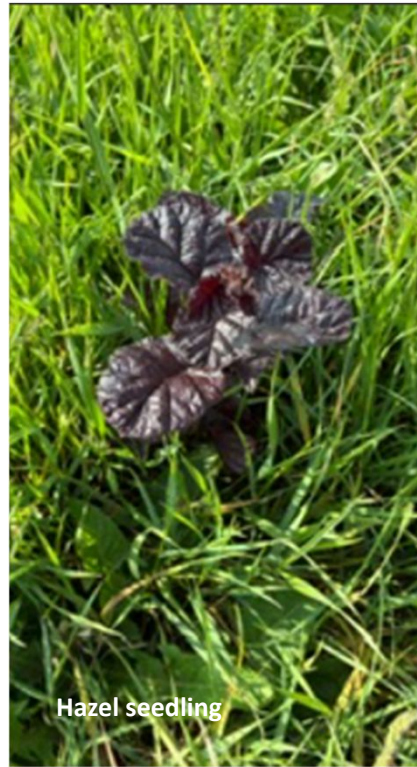


Young red currants





Birds foot trefoil



Hazel seedling



Sunflower (planted by a volunteer)



Poppy



Birds eggs



Red clover





---

Due to the reduced mowing regime, naturally occurring grasses are in abundance. These provide valuable habitat for pollinators and other insects, which in turn feed birds such as thrushes, robins and warblers, but other birds feed directly on the grass seed such as Goldfinch, which have been spotted in the newly planted trees on the Tree & Bee sites.

‘Small Blue’ butterflies have also been seen in the grassy areas, which, along with clover are the food plant of some of our native butterflies such as skippers and browns.

While grasses provide invaluable habitat, absorb more rainwater than mown areas and are more resilient to drought conditions. They can look untidy, so we are mowing the edge of these areas and also footpaths through sweeping through to create swathes of grasses which are more aesthetically pleasing.

A decorative banner with a dark green background. It features a bumblebee in the center, surrounded by autumn leaves in shades of orange, red, and yellow, and several white flowers with yellow centers. The text "We need your help to create a buzz!" is written in white, bold, sans-serif font across the middle of the banner.

## We need your help to create a buzz!

Would you like to join us in making your local area greener with fresh organic food on your doorstep? See shade trees blossom in spring and change colour to reds, yellows and burnt ambers during the autumnal months?

We want to make the area a pleasant and relaxing space for you to live with more wildflowers, butterflies, bees and bird song. We would also love to hear from you if you have seen any interesting flowers, insects or birds on any of the Tree & Bee sites.

If you live in Fair Oak or Horton Heath and would like to get involved with growing, watering and picking fresh organic food from the gardens, please contact Siobhan at Fair Oak Parish Council [siobhan.strand@fairoak-pc.gov.uk](mailto:siobhan.strand@fairoak-pc.gov.uk) or if you live in Bishopstoke contact Emma [admin@bishopstokepc.org](mailto:admin@bishopstokepc.org) or for general information, Becky at Eastleigh Borough Council [treeandbee@eastleigh.gov.uk](mailto:treeandbee@eastleigh.gov.uk) – there is no commitment or knowledge needed, but it's a great way to enjoy being outdoors with like minded people!



# Tree & Bee Corridor Project



For further information visit  
[eastleigh.gov.uk/treeandbee](http://eastleigh.gov.uk/treeandbee) or  
email [treeandbee@eastleigh.gov.uk](mailto:treeandbee@eastleigh.gov.uk)

Funded and delivered by Bishopstoke, Fair Oak and Horton Heath Local Area Committee and local partners



Bishopstoke Parish Council



**EASTLEIGH**  
BOROUGH COUNCIL

**WE CAN  
MAKE A  
DIFFERENCE**  
#CO2Neutral2030

