

The Tree and Bee Network

Connecting people and nature through the creation of resilient and sustainable landscapes

treeandbee@eastleigh.gov.uk
community@fairoak-pc.gov.uk
admin@bishopstoke.org





The Tree & Bee Network: Bishopstoke



The map of Bishopstoke below shows how woodland buffers our Parish, providing a haven for wildlife and a recreational space for us to enjoy



Individual trees are important stepping stones providing 'hotels' and 'cafes' for wildlife as birds, bats and insects travel through the landscape



...while hedges and hedge trees connect larger areas of woodland, providing natural corridors for wildlife to move through – in the same way roads allow us to travel between and towns and villages, with service stations along the way!

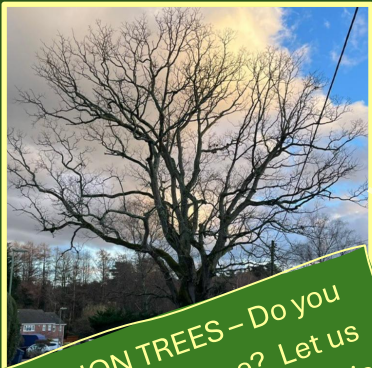


Woodlands help to filter air, capturing pollutants and replenishing oxygen, they absorb rain fall so it doesn't wash away soil and cause flooding, they create shade and cool summer temperatures and provide a home for thousands of insects, reptiles, amphibians, birds, mammals and smaller plants



Enhancing the green network:

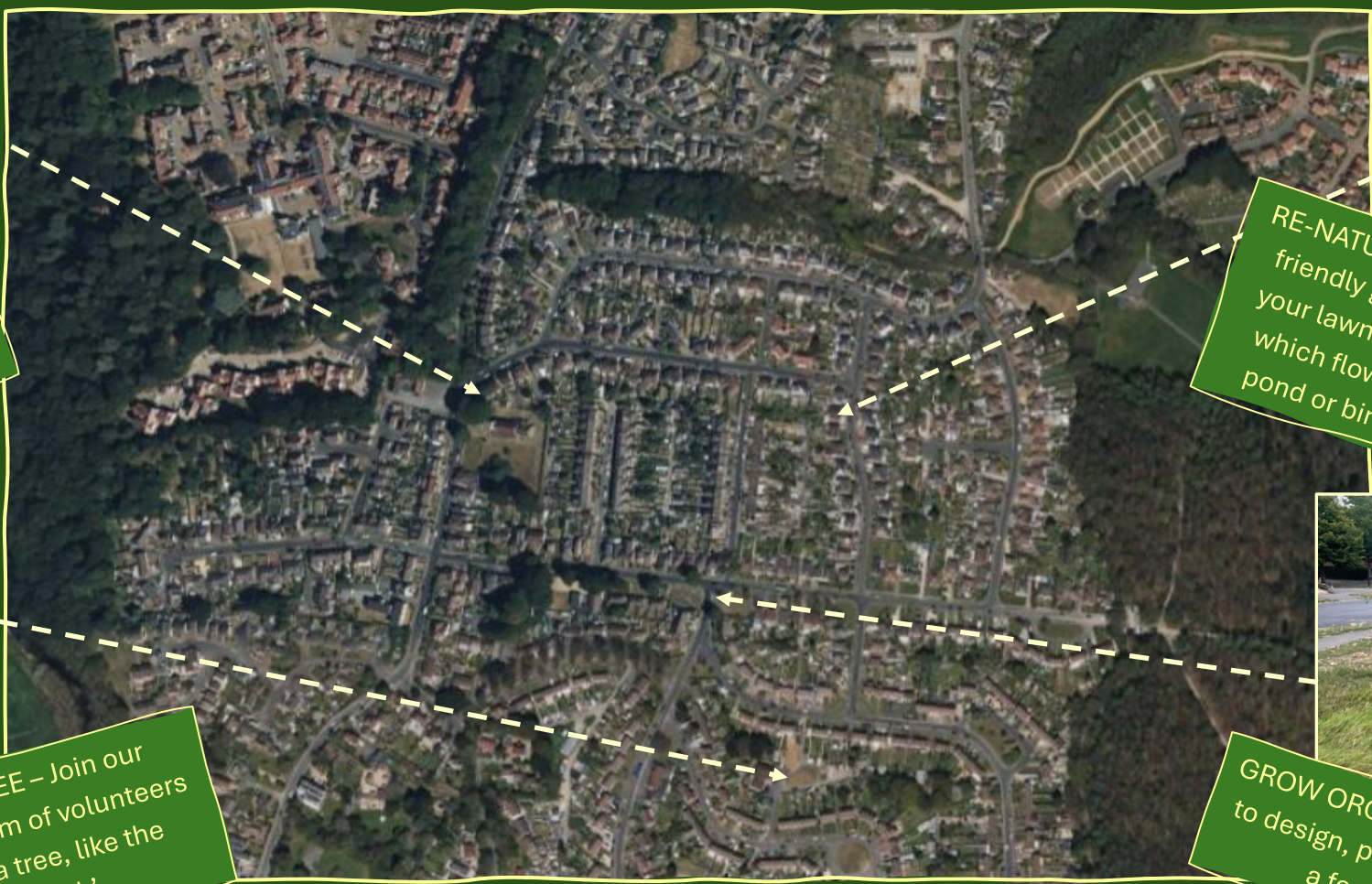
We can help nature and create a more beautiful landscape by protecting large individual trees, planting trees and hedges and enhancing green spaces...here's how you can get involved..



CHAMPION TREES – Do you have a favourite tree? Let us know where it is and why it is important to you and we will add it to our map!



PLANT A TREE – Join our wonderful team of volunteers and plant a tree, like the 'Diana Oak'



RE-NATURING – Create your own wildlife friendly garden by allowing a corner of your lawn to grow longer grass and see which flowers emerge, create a small pond or bird bath or plant a fruit tree!



GROW ORGANIC FOOD – help to design, plant and maintain a forest garden

Tree Champions – Do you have a favourite tree?



Oak in Bishopstoke. Photo taken by Diana Goodyear

We are calling for nominations for our ‘Tree Champions’ – which is an opportunity to celebrate the mature trees in the Parishes of Bishopstoke, Fair Oak and Horton Heath. These giants are known as the ‘Grandparent trees’ in some cultures and are respected and revered for their social, historical and environmental importance.

We would like to map the more mature trees and then create a self-guided trail, explaining their history, wildlife and folk law associations.

Do you have a favourite tree? Perhaps you have named it, or it has a special meaning to you. Please send in photos and tell us about it and we will add it to the map!



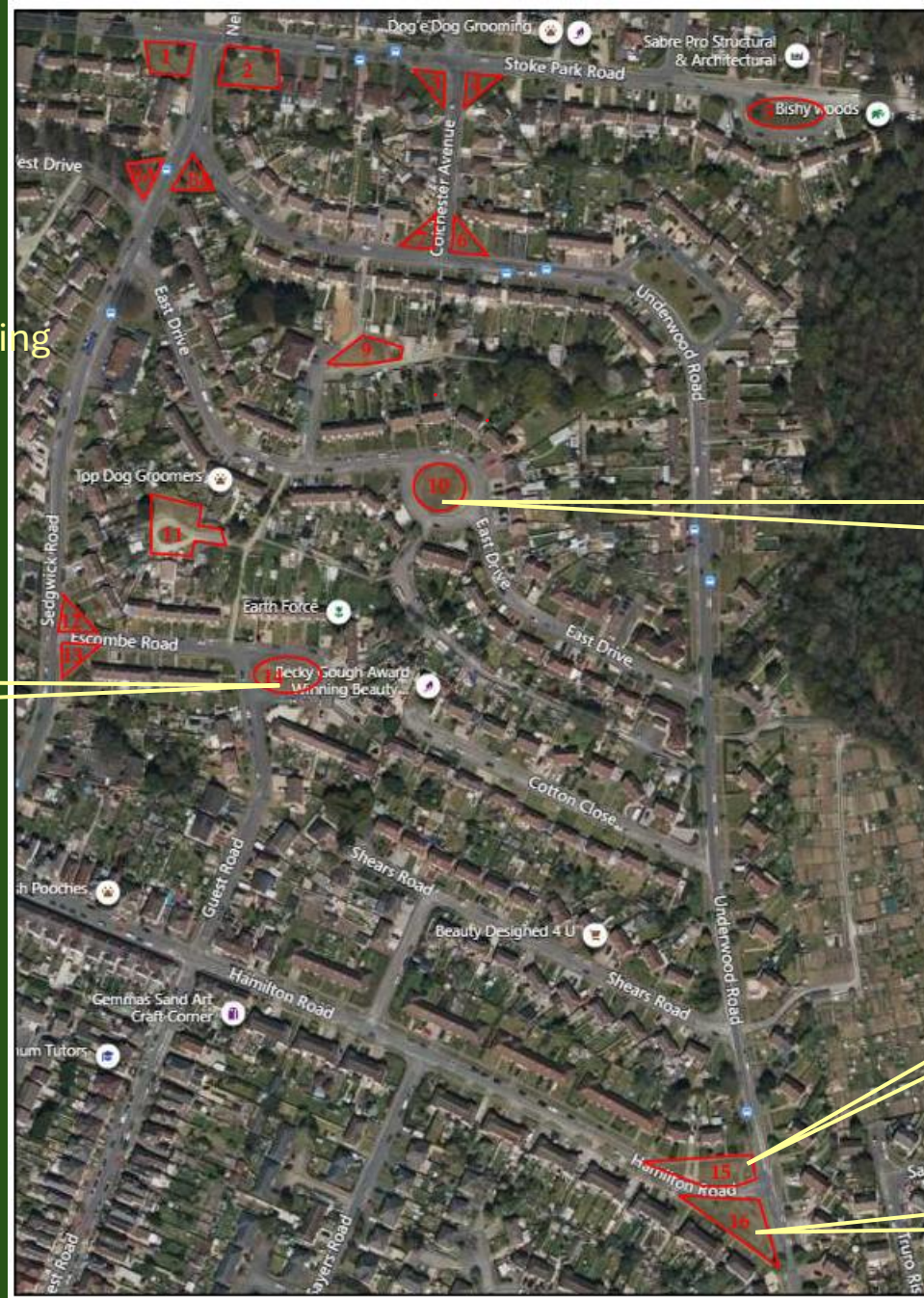
Volunteering in Bishopstoke

We are delighted to have more volunteers who have joined us to help nurture many of the Tree & Bee Gardens in Bishopstoke and we are Extremely grateful for their help in making Bishopstoke a greener and more biodiverse place to live.

We still need help with these gardens:

Garden 14
Escombe
Road

We will introduce you to the rest of the team and help you learn how to nurture the garden for wildlife and grow organic food for yourself and your community



Please contact
treeandbee@eastleigh.gov.uk or
admin@bishopstoke.org for more
information

Garden 10
East Drive

Garden 15
Hamilton
Road/Underwood
Road

Garden 16
Hamilton
Road/Underwood
Road

The Bishopstoke Tree & Bee Gardens (INTERNAL USE ONLY)

Volunteer Gardens

Volunteers are continuing to help nurture and develop the gardens in Bishopstoke and we have planted English oak, red oak, apple, pear, chestnut, Amelanchier, hawthorn, elder, holly, Judas tree, plum and walnut trees. Within gardens 1-13, we are now focusing on developing the ground layer and have planted shrub layer plants such as black current, gooseberry, rhubarb, cranberry and Eleagnus as well as pollinator plants. At Otter Close the new trees will be cared for over the drier months with watering help from Green Smile and also local volunteers to have offered to help.

T&B Art

It would be great to involve the volunteers with this project, to ensure residents are happy with the proposals, especially where permanent structures or acoustic art is to be installed – also to ensure the artwork represents the sustainable, resilient and wildlife friendly ethos of the project.

Mowing regime

Greensmile are fully on board with continuing the mowing regime to optimise the floral diversity within the Tree & Bee gardens, including Otter Close Park where we begin to develop swathes of unmown areas to allow the natural flora to push through. We are also investigating the possibility of relaxing mowing regimes on verges close to the Tree & Bee gardens.

Wildflowers

We have sown wildflower seeds in the nursery to be planted in the gardens in April. These small ‘pocket plants’ should be easier for the volunteers to water than the large swathes which were previously planted and will be allowed to set seed and spread in the autumn, hopefully resulting in naturally dispersed areas of wildflowers. Thanks to the EBC Tree nursery for help and support with this.

Shops

We will be approaching the local shops with design ideas for greening their premises with planting – which should encourage more trade as research shows how customers are drawn to a green environment due to the mental health benefits associated with plants and a more lush environment.

Activities

I am putting together a list of activities for the volunteers which will be on going as more local groups are signed up to deliver presentations eg bat and bird talks, willow sculptures and foraging.